

# KIDS & CONSERVATION

## Hey Kids,

would want to know more about these unique types of habitat found throughout the continent of Africa.

The term "kopje" is used to refer to a wide variety of small, rocky hills or hillocks that protrude from the floors of vast tropical grasslands such as the Serengeti and the South African Veldt. The geologic origin of the kopje varies from place to place. Some are old weathered buttes that represent more weather resistant rock which has had the surrounding rock worn away by erosional forces over time.

Some kopje are large masses of igneous or metamorphic rocks that have been forced upward through the softer sediments by tectonic or volcanic forces. These igneous and metamorphic rocks tend to be harder and more resistant to weathering by water or wind, thus they end up standing above the surrounding land. Some are even the result of

materials having been left behind by glaciers, which have long since melted. Rising several hundred feet in some areas, these unusual hills provide unique habitat opportunities for numerous species.

The Kopje exhibit at the Louisville Zoo will present a number of unusual animals, some of which are being exhibited at our Zoo for the first time. The Rock hyrax, and the Giant elephant shrew are both new species for the Louisville Zoo.

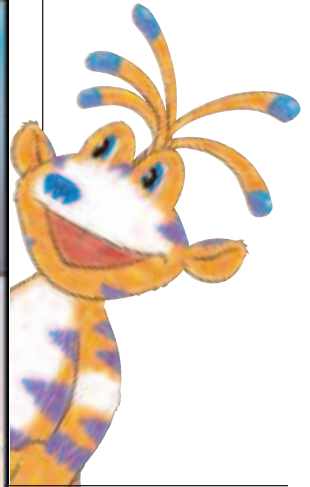
Joining these two mammals will be the first breeding pair of Rodrigues fruit bats to be housed at the Zoo, and several bird species including the Lilac breasted roller, Red-billed hornbill and the African pygmy falcon.

This multi-species collection of unusual and active creatures should make the new Kopje exhibit a popular and exciting place to spend some time while visiting the Louisville Zoo.



Backyard Action Hero Program sponsored by  
**TOYOTA** | georgetown

By DOUG MCCOY, Assistant Curator of Education



## You Be the Expert

Choose one of your favorite Zoo animals and gather some information to make your own species fact sheet.

Animal Sketch

Common Name \_\_\_\_\_

Scientific Name \_\_\_\_\_

Range \_\_\_\_\_

Habitat \_\_\_\_\_

Diet \_\_\_\_\_

Behaviors \_\_\_\_\_

Points of Interest \_\_\_\_\_

Status in the Wild \_\_\_\_\_

\_\_\_\_\_

\_\_\_\_\_

\_\_\_\_\_